



## What does BSCW look like?

You may have worked with BSCW or with other collaborativework tools before. If this is the case, the information you can find here will probably not be useful to you. But if you haven't, you may find it useful to have a quick bok at what BSCW looks like. Later on in Activity 1 you will find detailed information about the most important features of BSCW. At this stage we just want you to have an idea of what you are going to see when you enter it.

BSCW is organised in workspaces where you, your tutor and your fellow-students can store and manage common documents. These documents may be texts, pictures, databases, html's, address books, etc., and all of you can comment on them and, more importantly, version them (and recall older versions if it is necessary). All the documents you share are not stored in your PC, but in the server, so that they are accessible to all your colleagues even when you are not connected to the Internet. BSCW also informs you (and the persons who share your workspace) about the last events that happen inside your space.

But only the persons you invite are allowed to manipulate the documents you want to share, and you may even restrict the actions that your guests are allowed to perform; you can also keep your private spaces with information you want to keep for yourself.

To access BSCW you just need a conventional web browser, using conventional "browsing" actions (forwards, backwards, refresh, etc.). The next illustration schematically shows several of the characteristics of BSCW:



**Entirely Web-based**

**Multiple languages & tailorability**

**Meeting support**

**User authentication & anonymous access**

**Hierarchical folders**

**Self organizing teams**

**Rating**

**Version management**

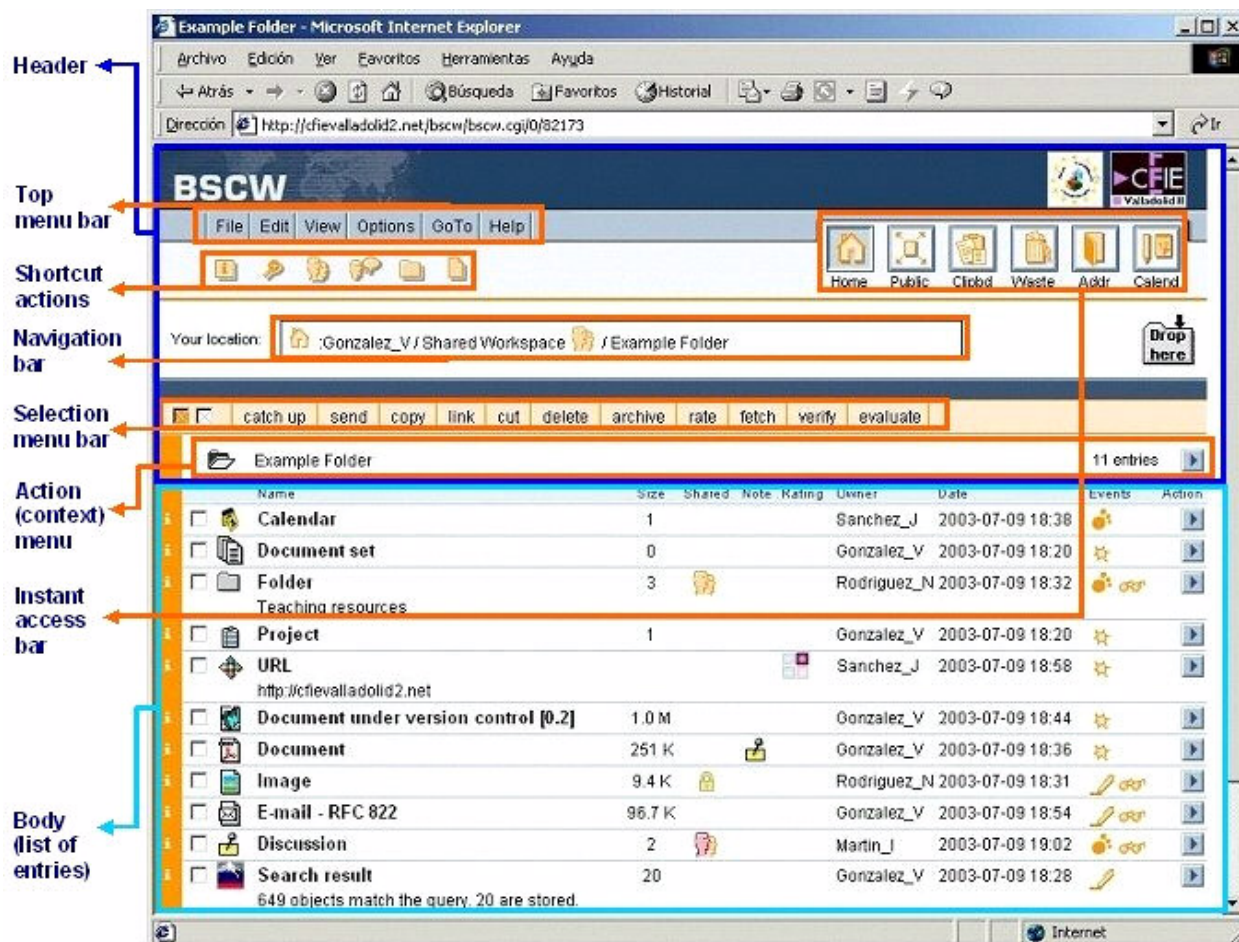
**Documents**

**Threaded discussions**

**Event notification**

Name	Size	Shared	Note	Rating	Owner	Date	Events	Action
Calendar	1				Sanchez_J	2003-07-09 18:38		
Document set	0				Gonzalez_V	2003-07-09 18:20		
Folder	3				Rodriguez_N	2003-07-09 18:32		
Project	1				Gonzalez_V	2003-07-09 18:20		
URL	http://cfievalladolid2.net				Sanchez_J	2003-07-09 18:58		
Document under version control [0.2]	1.0 M				Gonzalez_V	2003-07-09 18:44		
Document	251 K				Gonzalez_V	2003-07-09 18:36		
Image	9.4 K				Rodriguez_N	2003-07-09 18:31		
E-mail - RFC 822	96.7 K				Gonzalez_V	2003-07-09 18:54		
Discussion	2				Martin_J	2003-07-09 19:02		
Search result	20				Gonzalez_V	2003-07-09 18:28		

And next you can see the names of the main elements in the BSCW interface:



That is the way BSCW looks. But as you have just read, access is limited to guests, so it is necessary to register first.

That is the aim of Activity 1. So we suggest you to return to it.

Happy BSCWing!